

Equipment Report

Training Project - Innovation Depot

1500 1st Avenue North
Birmingham, AL 35203

Condoit Training Account

Created: Jul 31 2024



Equipment

Generator - Gen 1

KVA Rating: 50

Location: Loading doc

Phase/Wire: 3phase-4wire

Voltage: 480V Delta

Downstream Raceways

Raceway Gen 1 - ATS LS

Conductors:

1x #18 AWG, copper

Diameter (inches): 1

Length (feet): 20

Material: IMC

Parallel Raceway Count: 1

Type: nonFlexibleConduit



Other



Generator - Main Gen

KVA Rating: 100

Phase/Wire: 1phase-3wire

Voltage: 277/480V

Downstream Raceways

Raceway Main Gen - Main Breaker

Conductors:

1x #14 AWG, copper

Diameter (inches): 1

Length (feet): 20

Material: Flex

Parallel Raceway Count: 2

Type: flexibleConduit



Utility Transformer - Alabama Power

kVA Rating: 1000

Location: 2nd Ave North loading dock

Phase/Wire: 3phase-4wire

Service Provider: Alabama Power

Utility ID: 88-51693

Voltage: 277/480V Y

Notes

Jun 05 2024 by null

Category: Not specified

Risk Level: Low

This is another issue

Jun 05 2024 by null

Category: Not specified

Risk Level: Medium

Issue with location

Downstream Raceways

Raceway Alabama Power - Main Breaker

Conductors:

1x #14 AWG, copper

Diameter (inches): 2

Length (feet): 20

Material: EMT

Parallel Raceway Count: 2

Type: nonFlexibleConduit

Equipment Report



Raceway Alabama Power - Panel A

Conductors:

1x #

Length (feet): 20

Type: nonFlexibleConduit

Other



Equipment Report







Switchboard - Main Breaker

Location: Loading dock

Measured load: A-Phase: 0

Measured load: B-Phase: 0

Measured load: C-Phase: 0

Phase/Wire: 3phase-4wire

Voltage: 277/480V Y

Downstream Raceways

Busduct Main Breaker - Main Switchbaord

Conductors:

Equipment Report



1x #

Amperage Rating: 4000

Length (feet): 150

Manufacturer: ABB

Type: busduct

Other





Panel - Panel A

Meter attached?: false

Left Breaker Spaces: 0

Location: Electric room

Main type (MLO, MBO, etc): Main Breaker

Measured load: A-Phase: 10

Measured load: B-Phase: 10

Measured load: C-Phase: 10

Phase/Wire: 3phase-4wire

Right Breaker Spaces: 0



Voltage: 277/480V Y

Switchboard - Main Switchbaord

Location: Electrical Room

Measured load: A-Phase: 0

Measured load: B-Phase: 0

Measured load: C-Phase: 0

Phase/Wire: 3phase-4wire

Voltage: 277/480V Y

Downstream Raceways

Raceway Main Switchbaord - TX 1D

Conductors:

1x #14 AWG, copper

Diameter (inches): 1.5

Length (feet): 25

Material: Flex

Parallel Raceway Count: 1

Type: flexibleConduit

Raceway Main Switchbaord - ATS LS

Conductors:

1x #18 AWG, copper

Diameter (inches): 1

Length (feet): 20

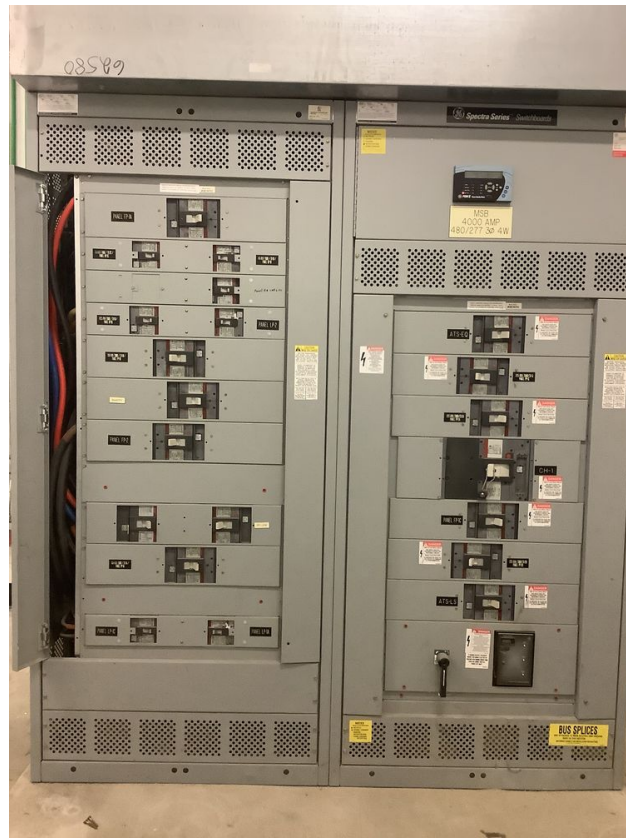
Material: EMT

Parallel Raceway Count: 1

Type: nonFlexibleConduit



Other





Automatic Transfer Switch - ATS LS

Location Description: Electrical Room 2

Phase/Wire: 3phase-4wire

Equipment Report



Voltage: 480V Delta

Downstream Raceways

Raceway ATS LS - FP EM LS - Floor 1

Conductors:

1x #18 AWG, copper

Diameter (inches): 1

Length (feet): 20

Material: EMT

Parallel Raceway Count: 1

Type: nonFlexibleConduit

Raceway ATS LS - FP EM LS - Floor 2

Conductors:

1x #18 AWG, copper

Diameter (inches): 1

Length (feet): 20

Material: EMT

Parallel Raceway Count: 1

Type: nonFlexibleConduit

Switchboard - FP EM LS - Floor 1

Location: Electrical Room - Floor 1

Measured load: A-Phase: 10

Measured load: B-Phase: 10

Measured load: C-Phase: 10

Phase/Wire: 3phase-4wire

Voltage: 277/480V Y



Downstream Raceways

Raceway FP EM LS - Floor 1 - Charger

Conductors:

1x #12 AWG, copper

1x #16 AWG, copper

Diameter (inches): 1

Length (feet): 20

Material: IMC

Parallel Raceway Count: 2

Type: nonFlexibleConduit

Raceway FP EM LS - Floor 1 - Charger Photos

Conductors:

1x #12 AWG, copper

1x #16 AWG, copper

Diameter (inches): 1

Length (feet): 20

Material: IMC

Parallel Raceway Count: 2

Type: nonFlexibleConduit

Raceway FP EM LS - Floor 1 - Charger

Conductors:

1x #18 AWG, copper

Diameter (inches): 2

Length (feet): 20

Material: PVC

Equipment Report



Parallel Raceway Count: 2

Type: nonFlexibleConduit

Raceway FP EM LS - Floor 1 - Pp1

Conductors:

1x #3 AWG, copper

Diameter (inches): 2

Length (feet): 20

Material: EMT

Parallel Raceway Count: 2

Type: nonFlexibleConduit

Raceway FP EM LS - Floor 1 - Hot Tub

Conductors:

1x #16 AWG, copper

Diameter (inches): 2

Length (feet): 20

Material: Flex

Parallel Raceway Count: 3

Type: flexibleConduit

Raceway FP EM LS - Floor 1 - New Charger

Conductors:

1x #14 AWG, aluminum

Diameter (inches): 0.5

Length (feet): 20

Material: PVC

Parallel Raceway Count: 2

Equipment Report



Type: nonFlexibleConduit

Other



Switchboard - FP EM LS - Floor 2

Location: Electrical Room - Floor 1

Measured load: A-Phase: 10

Measured load: B-Phase: 10

Measured load: C-Phase: 10

Phase/Wire: 3phase-4wire

Voltage: 480V Delta

Downstream Raceways

Raceway FP EM LS - Floor 2 - ABK6-FLP



Conductors:

1x #

Length (feet): 20

Type: nonFlexibleConduit

Transformer - TX 1D

Kva Rating: 50

Location Description: Electrical room

Primary Phase/Wire: 3phase-4wire

Primary Voltage: 480V Delta

Secondary Phase/Wire: 3phase-4wire

Secondary Voltage: 120/208V Y

Downstream Raceways

Raceway TX 1D - Rp1d

Conductors:

1x #14 AWG, copper

Diameter (inches): 2.5

Length (feet): 4

Material: Seal-tight

Parallel Raceway Count: 1

Type: flexibleConduit



Other





EV Charger - Charger

Amperage Rating: 10

Level: 2

Location: Main Parking Lot

Manufacturer: EnviroSpark

Number of Ports: 2

EV Charger - Charger Photos

Amperage Rating: 10

Level: 2

Location: Main Parking Lot

Equipment Report



Manufacturer: EnviroSpark

Number of Ports: 2

Notes

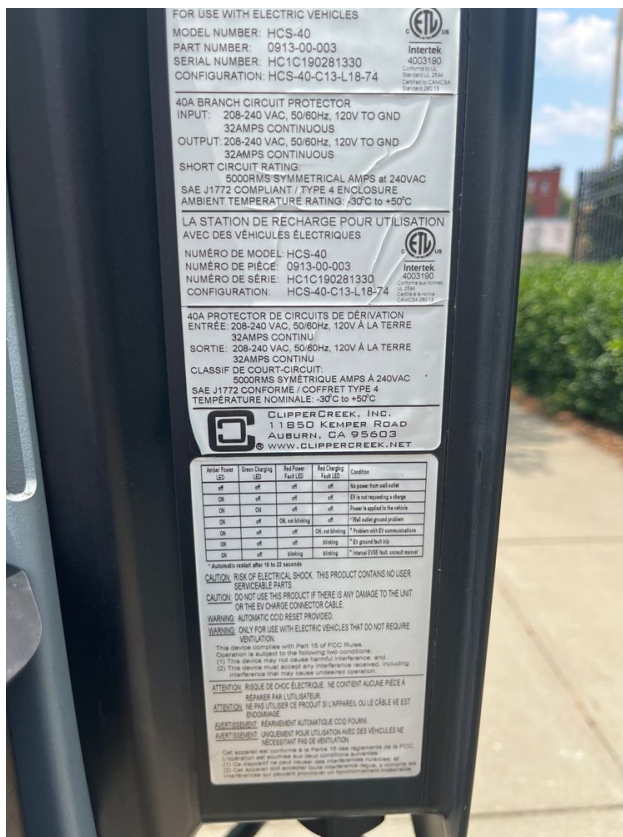
Jun 05 2024 by null

Category: Not specified

Risk Level: Low

Text something is wrong. Need to check on this.

Other





EV Charger - Charger

Amperage Rating: 40

Level: 2

Manufacturer: EnviroSpark

Number of Ports: 2

Notes

Jun 05 2024 by null

Category: Not specified

Risk Level: Low

Voice to text notes



Generic Load - Hot Tub

Amperage Rating: 40

Phase/Wire: 3phase-4wire

Voltage: 480V Delta

EV Charger - New Charger

Amperage Rating: 10

Level: 2

Manufacturer: BTCPower

Number of Ports: 2

Panel - Pp1

Equipment Report



Meter attached?: false

Left Breaker Spaces: 0

Location: Electricl room

Main type (MLO, MBO, etc): Main Breaker

Phase/Wire: 1phase-3wire

Right Breaker Spaces: 0

Voltage: 277/480V

Motor - ABK6-FLP

Amperage Rating: 20

Location: Loading Dock

Panel - Rp1d

Meter attached?: false

Left Breaker Spaces: 0

Location: Electrical room

Main type (MLO, MBO, etc): Main Breaker

Measured load: A-Phase: 0

Measured load: B-Phase: 0

Measured load: C-Phase: 0

Phase/Wire: 3phase-4wire

Right Breaker Spaces: 0

Voltage: 120/208V Y

Downstream Raceways

Raceway Rp1d - Outside AC Condesnsor

Conductors:

1x #18 AWG, copper

Equipment Report



Diameter (inches): 1

Length (feet): 20

Material: EMT

Parallel Raceway Count: 1

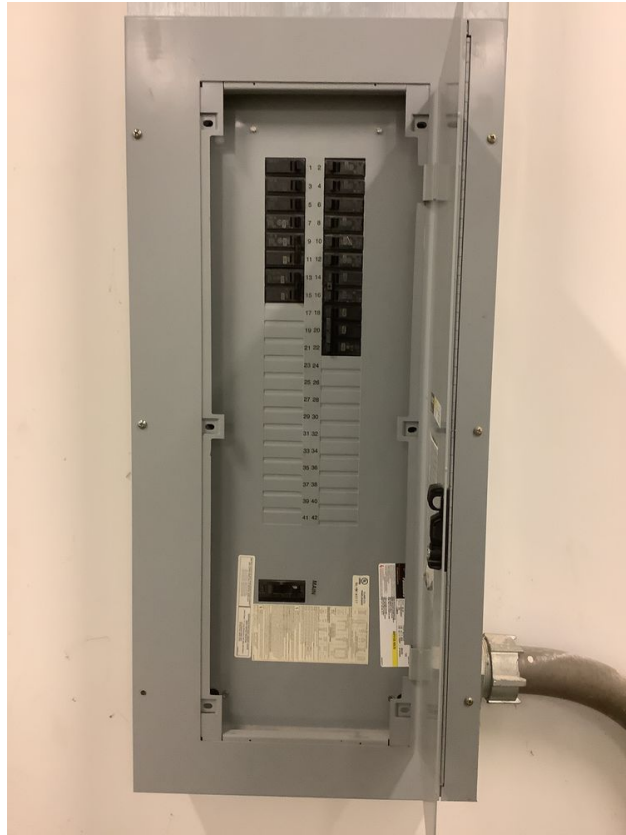
Type: nonFlexibleConduit

Front (Closed)



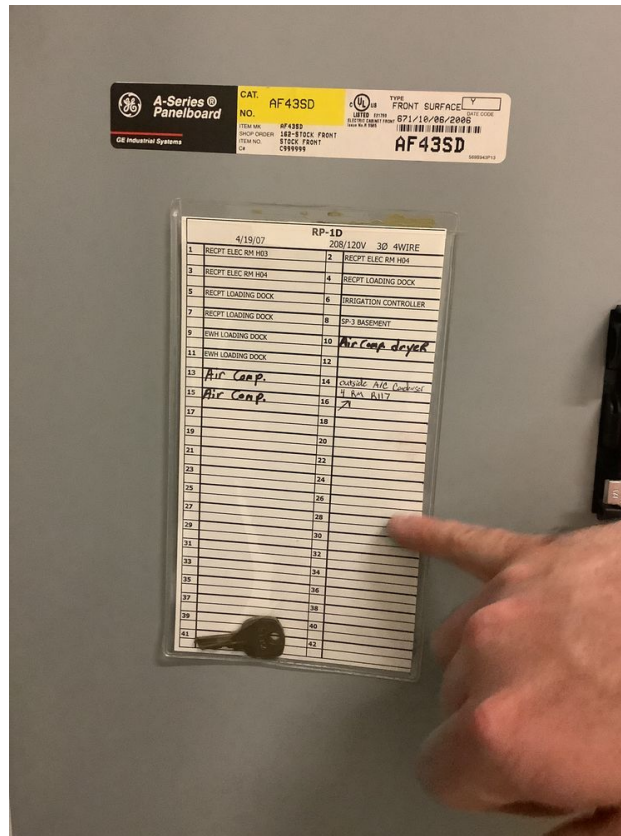


Front (Open)





Panel Schedule



Generic Load - Outside AC Condenssor

Amperage Rating: 30

Phase/Wire: 3phase-4wire

Voltage: 120/208V Y