



# Training Project - Innovation Depot

Conduit Report

1500 1st Avenue North  
Birmingham, AL 35203

Nov 07 2024



Birmingham , AL

(659) 999-9999

Project Contact  
Missy Wanstall

missy@condoit.io

Project  
Training Project - Innovation Depot

1500 1st Avenue North  
Birmingham, AL 35203

Date  
November 7, 2024

## Bill of Materials

Quantity	Item	Manufacturer	Model No.	Specifications
40 feet	Raceway			What type?: <b>Non-flexible Conduit</b> What material?: <b>PVC</b> Diameter (inches): <b>2</b>
5	Coupling			What type?: <b>Non-flexible Conduit</b> What material?: <b>PVC</b> Diameter (inches): <b>2</b>
2	Connector			What type?: <b>Non-flexible Conduit</b> What material?: <b>PVC</b> Diameter (inches): <b>2</b>
40 feet	Raceway			What type?: <b>Cable</b> What material?: <b>Romex</b>
5	Coupling			What type?: <b>Cable</b> What material?: <b>Romex</b>
2	Connector			What type?: <b>Cable</b> What material?: <b>Romex</b>
40 feet	Conductor			Conductor Material: <b>copper</b> Gauge: <b>14 AWG</b>
160 feet	Conductor			Conductor Material: <b>copper</b> Gauge: <b>12 AWG</b>
40 feet	Conductor			Conductor Material: <b>copper</b> Gauge: <b>10 AWG</b>
1	Breaker			How many poles?: <b>2</b> Trip Rating: <b>30</b>
1	Breaker			AIC Rating: <b>0</b> Frame Size: <b>0</b> How many poles?: <b>2</b> Short-Time Delay: <b>0</b> Short-Time Pickup: <b>0</b> Trip Rating: <b>40</b>
1	EV Charger	EV Charge Solutions		Level: <b>2</b> Number of Ports: <b>3</b> Amperage Rating: <b>40</b>
1	EV Charger	EV Charge Solutions		Level: <b>2</b> Number of Ports: <b>2</b> Amperage Rating: <b>40</b>



# Site Plan

This is a high-level view showing existing and / or future equipment location.



# Project Information

## Project Overview

### Directions for Technician:

Customer needs a quote to add 2 level 2 chargers. Install should be adjacent to the existing 2 chargers in the main parking lot. Take photos and videos of the area for new switchgear. Be sure to get a key from Glenda at the front desk

## Site Walk Information

Date Site Walk Completed:	Aug 02 2023
---------------------------	-------------

Individual Performing Site Walk:	Anne Randall
----------------------------------	--------------

Email:	Anne@conduit.io
--------	-----------------

## Customer Information

Name/Company:	Innovation Depot
---------------	------------------

Primary Contact Person:	Emily Frontdesk
-------------------------	-----------------

Email:	frontdesk@depot.com
--------	---------------------

Phone:	(659) 999-9999
--------	----------------



## Site Information

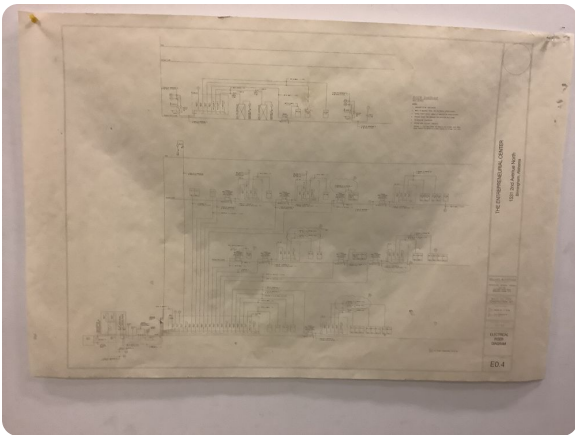
Site Use:	Commercial - Retail
Parking Type:	Surface Lot
Distance From Electrical Room to Charger Site (feet):	100

## Charger Use

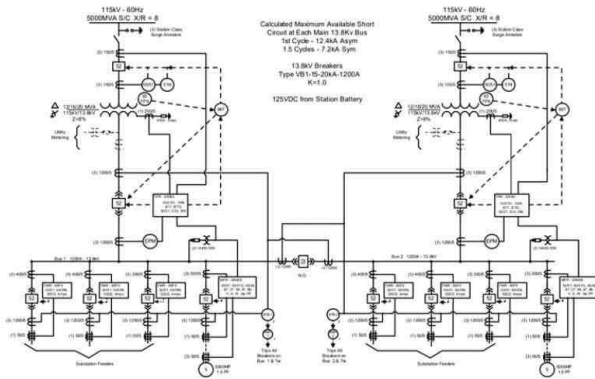
Will chargers be available to the public?:	Yes
Are there existing chargers on site?:	Yes

## As-Built Electrical Plans

Are there existing electrical plans? Verify with owner:	Yes
---	-----



# Existing Site Plans



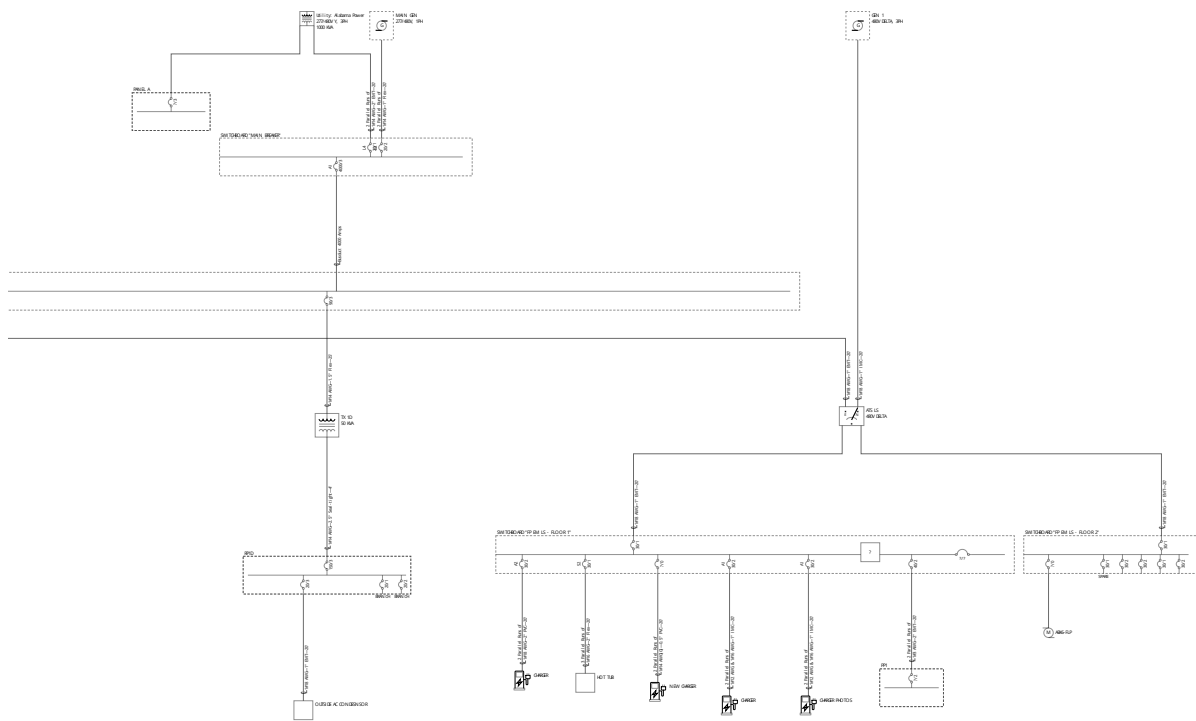
## Site Narrative

General  
Notes:

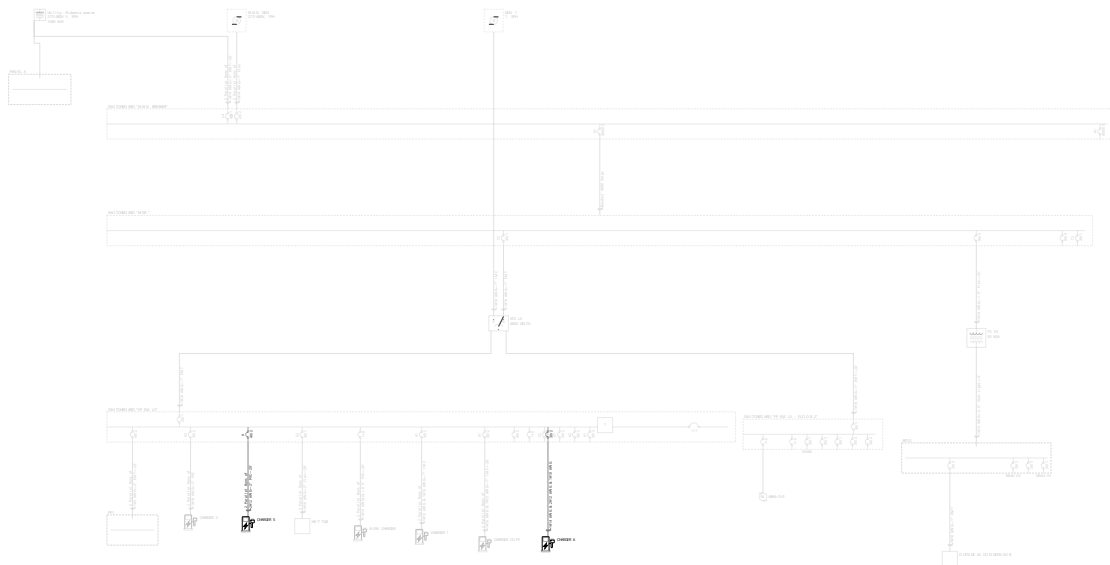
New utility connection and switchgear should be installed on the north side of building on 2nd Ave North. 2 existing chargers.



# As Built



# Additional Chargers





# Site Photos & Videos

## Electrical Room



## New Utility Transformer





## New Switchgear Location



## Proposed Charger Location





Conduit Run to Charger



[View video in Conduit project](#)



# Equipment

## Automatic Transfer Switch - ATS LS

Location Description:	Electrical Room 2
Voltage:	480V Delta
Phase/Wire:	3phase-4wire

## EV Charger - Charger Photos

Location:	Main Parking Lot
Amperage Rating:	10
Level:	2
Manufacturer:	EnviroSpark
Number of Ports:	2

## EV Charger - Charger

Location:	Main Parking Lot
Amperage Rating:	10
Level:	2
Manufacturer:	EnviroSpark
Number of Ports:	2



## EV Charger - Charger

Amperage Rating:	40
Level:	2
Manufacturer:	EnviroSpark
Number of Ports:	2

## Generator - Gen 1

Location:	Loading doc
KVA Rating:	50
Voltage:	480V Delta
Phase/Wire:	3phase-4wire

## Generator - Main Gen

KVA Rating:	100
Voltage:	277/480V
Phase/Wire:	1phase-3wire

## Generic Load - Hot Tub

Voltage:	480V Delta
Phase/Wire:	3phase-4wire
Amperage Rating:	40



## Generic Load - Outside AC Condenssor

Voltage:	120/208V Y
Phase/Wire:	3phase-4wire
Amperage Rating:	30

## Motor - ABK6-FLP

Location:	Loading Dock
Amperage Rating:	20

## Panel - Pp1

Location:	Electricl room
Voltage:	277/480V
Phase/Wire:	1phase-3wire
Meter attached?:	false
Left Breaker Spaces:	0
Main type (MLO, MBO, etc):	Main Breaker
Right Breaker Spaces:	0



# Panel - Rp1d

Location:	Electrical room
Voltage:	120/208V Y
Phase/Wire:	3phase-4wire
Meter attached?:	false
Left Breaker Spaces:	0
Main type (MLO, MBO, etc):	Main Breaker
Measured load: A-Phase:	0
Measured load: B-Phase:	0
Measured load: C-Phase:	0
Right Breaker Spaces:	0



## Panel - Panel A

Location:	Electricl room
Voltage:	277/480V Y
Phase/Wire:	3phase-4wire
Meter attached?:	false
Left Breaker Spaces:	0
Main type (MLO, MBO, etc):	Main Breaker
Measured load: A-Phase:	10
Measured load: B-Phase:	10
Measured load: C-Phase:	10
Right Breaker Spaces:	0

## Switchboard - FP EM LS - Floor 1

Location:	Electrical Room - Floor 1
Voltage:	277/480V Y
Phase/Wire:	3phase-4wire
Measured load: A-Phase:	10
Measured load: B-Phase:	10
Measured load: C-Phase:	10





## Switchboard - Main Switchbaord

Location:	Electrical Room
Voltage:	277/480V Y
Phase/Wire:	3phase-4wire
Measured load: A-Phase:	0
Measured load: B-Phase:	0
Measured load: C-Phase:	0

## Switchboard - Main Breaker

Location:	Loading dock
Voltage:	277/480V Y
Phase/Wire:	3phase-4wire
Measured load: A-Phase:	0
Measured load: B-Phase:	0
Measured load: C-Phase:	0



## Switchboard - FP EM LS - Floor 2

Location:	Electrical Room - Floor 1
Voltage:	480V Delta
Phase/Wire:	3phase-4wire
Measured load: A-Phase:	10
Measured load: B-Phase:	10
Measured load: C-Phase:	10

## Transformer - TX 1D

Location Description:	Electrical room
Kva Rating:	50
Primary Phase/Wire:	3phase-4wire
Primary Voltage:	480V Delta
Secondary Phase/Wire:	3phase-4wire
Secondary Voltage:	120/208V Y



## Utility Transformer - Alabama Power

Location:	2nd Ave North loading dock
Utility ID:	88-51693
kVA Rating:	1000
Voltage:	277/480V Y
Phase/Wire:	3phase-4wire
Service Provider:	Alabama Power

## EV Charger - New Charger

Amperage Rating:	10
Level:	2
Manufacturer:	BTCPower
Number of Ports:	2

