

Conduit Sample Project

Maintenance Records

111 Harbor Dr.
San Diego, CA 92101
Jan 06 2025

Maintenance Records

Equipment Details

Type: Panel

Name: PP-LotA

Last Inspection Performed: Jan 6, 2025

Next Service Due: Jan 6, 2030

Equipment Inspections

Visual Inspections (13.3.1)

Panelboards and switchboards shall be visually inspected in accordance with Table 13.3.1.

By: Missy Wanstall missy@conduit.io

Submission Date: Jan 6, 2025

Next Inspection Due: Jan 6, 2030

Selected Condition: Condition1

1. Inspect external physical condition

This includes condition and integrity of applied labels.

As found, does the condition of the equipment meet the requirements? Yes

As left, does the condition of the equipment meet the requirements? Yes

Identified Issues

None

Proposed Solutions

None

Notes/Comments

Old rust wear; missing cover



Maintenance As Found



2. Inspect anchorage and grounding

As found, does the condition of the equipment meet the requirements? Yes

As left, does the condition of the equipment meet the requirements? Yes

Identified Issues

None

Proposed Solutions

None

Notes/Comments

None

3. Verify circuit breakers, fuses, and overload elements are the right sizes and types and correspond to the drawings and power system studies

As found, does the condition of the equipment meet the requirements? No

As left, does the condition of the equipment meet the requirements? No

Identified Issues

breaker has broken screws

Proposed Solutions



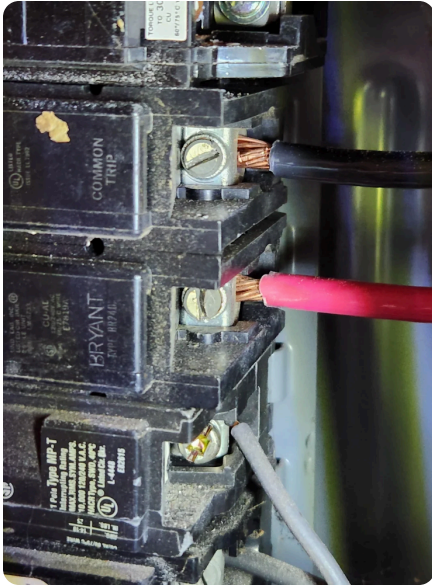
Conduit Sample Project

replaced screws

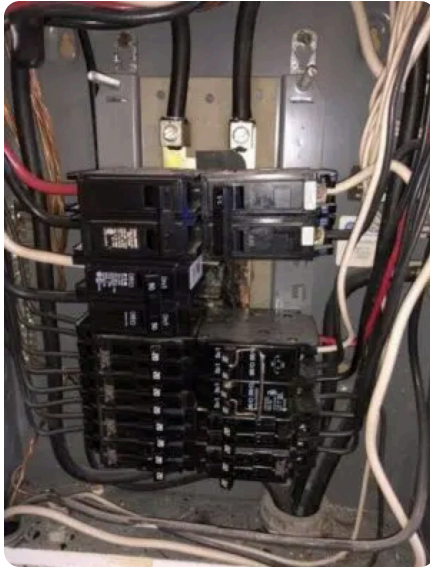
Notes/Comments

None

Maintenance As Found



Maintenance As Left



4. For connected communicating addressable devices, verify the device addresses are set in accordance with documentation

Confirm addressing or correct device association where protective devices or the human machine interface (HMI) are connected to multiple devices via a communication network.

As found, does the condition of the equipment meet the requirements? N/A

As left, does the condition of the equipment meet the requirements? N/A

Identified Issues

None

Proposed Solutions

None

Notes/Comments

None

5. Verify instrument transformer ratios are correct

As found, does the condition of the equipment meet the requirements? N/A

As left, does the condition of the equipment meet the requirements? N/A

Identified Issues

None

Proposed Solutions

None

Notes/Comments

None

6. Inspect insulators for damage or contaminated surfaces

As found, does the condition of the equipment meet the requirements? Yes

As left, does the condition of the equipment meet the requirements? Yes

Identified Issues

None

Proposed Solutions

None

Notes/Comments

None

7. Verify filters are clean and in place

As found, does the condition of the equipment meet the requirements? No

As left, does the condition of the equipment meet the requirements? Yes

Identified Issues

None

Proposed Solutions

Replaced filters

Notes/Comments

None

8. Ensure maintenance devices and tools are available for equipment servicing

As found, does the condition of the equipment meet the requirements? No

As left, does the condition of the equipment meet the requirements? No

Identified Issues

None

Proposed Solutions

None



Notes/Comments

Need additional access to secondary electrical room

9. Verify phase barriers are in place

As found, does the condition of the equipment meet the requirements? Yes

As left, does the condition of the equipment meet the requirements? Yes

Identified Issues

None

Proposed Solutions

None

Notes/Comments

None

10. Visually inspect environmental controls, where provided

Includes, but is not limited to, fans, heaters, thermostats and humidity control equipment and settings.

As found, does the condition of the equipment meet the requirements? N/A

As left, does the condition of the equipment meet the requirements? N/A

Identified Issues

None

Proposed Solutions

None

Notes/Comments

None

11. For individual components, refer to the appropriate chapter(s) of this standard

As found, does the condition of the equipment meet the requirements? N/A

As left, does the condition of the equipment meet the requirements? N/A

Identified Issues

None

Proposed Solutions

None

Notes/Comments

None



Visual Inspections (13.3.1)

Panelboards and switchboards shall be visually inspected in accordance with Table 13.3.1.

By: Missy Wanstall missy@conduit.io

Submission Date: Dec 20, 2024

Next Inspection Due: Dec 20, 2029

Selected Condition: Condition1

1. Inspect external physical condition

This includes condition and integrity of applied labels.

As found, does the condition of the equipment meet the requirements? Yes

As left, does the condition of the equipment meet the requirements? Yes

Identified Issues

Old rust wear missing cover

Proposed Solutions

None

Notes/Comments

None

2. Inspect anchorage and grounding

As found, does the condition of the equipment meet the requirements? Yes

As left, does the condition of the equipment meet the requirements? Yes

Identified Issues

None

Proposed Solutions

None

Notes/Comments

None

3. Verify circuit breakers, fuses, and overload elements are the right sizes and types and correspond to the drawings and power system studies

As found, does the condition of the equipment meet the requirements? No

As left, does the condition of the equipment meet the requirements? No

Identified Issues



Wrong wire size for breaker

Proposed Solutions

Replace wire

Notes/Comments

None

4. For connected communicating addressable devices, verify the device addresses are set in accordance with documentation

Confirm addressing or correct device association where protective devices or the human machine interface (HMI) are connected to multiple devices via a communication network.

As found, does the condition of the equipment meet the requirements? N/A

As left, does the condition of the equipment meet the requirements? N/A

Identified Issues

None

Proposed Solutions

None

Notes/Comments

Confirm addressing or correct device association where protective devices or the human machine interface (HMI) are connected to multiple devices via a communication network.

5. Verify instrument transformer ratios are correct

As found, does the condition of the equipment meet the requirements? N/A

As left, does the condition of the equipment meet the requirements? N/A

Identified Issues

None

Proposed Solutions

None

Notes/Comments

None

6. Inspect insulators for damage or contaminated surfaces

As found, does the condition of the equipment meet the requirements? Yes

As left, does the condition of the equipment meet the requirements? Yes

Identified Issues



None

Proposed Solutions

None

Notes/Comments

None

7. Verify filters are clean and in place

As found, does the condition of the equipment meet the requirements? No

As left, does the condition of the equipment meet the requirements? No

Identified Issues

Filters are dirty

Proposed Solutions

Replace filters

Notes/Comments

None

8. Ensure maintenance devices and tools are available for equipment servicing

As found, does the condition of the equipment meet the requirements? No

As left, does the condition of the equipment meet the requirements? No

Identified Issues

None

Proposed Solutions

Need more info to determine tools needed

Notes/Comments

None

9. Verify phase barriers are in place

As found, does the condition of the equipment meet the requirements? Yes

As left, does the condition of the equipment meet the requirements? Yes

Identified Issues

None

Proposed Solutions

None



Notes/Comments

None

10. Visually inspect environmental controls, where provided

Includes, but is not limited to, fans, heaters, thermostats and humidity control equipment and settings.

As found, does the condition of the equipment meet the requirements? N/A

As left, does the condition of the equipment meet the requirements? N/A

Identified Issues

None

Proposed Solutions

None

Notes/Comments

None

11. For individual components, refer to the appropriate chapter(s) of this standard

As found, does the condition of the equipment meet the requirements? N/A

As left, does the condition of the equipment meet the requirements? N/A

Identified Issues

None

Proposed Solutions

None

Notes/Comments

None

Equipment Details

Type: Switchboard

Name: SW1

Last Inspection Performed: Oct 17, 2024

Next Service Due: Oct 17, 2027

Equipment Inspections

Mechanical Servicing (13.3.4)

Panelboards and switchboards shall be mechanically serviced in accordance with Table 13.3.4 (NPFA 70B 2023)

By: Missy Wanstall missy+training@conduit.io



Conduit Sample Project

Submission Date: Oct 17, 2024

Next Inspection Due: Oct 17, 2027

Selected Condition: Condition2

1. Inspect mechanical condition

Is the equipment in satisfactory mechanical condition? Yes

Notes/Comments

None

2. Ensure maintenance devices and tools are available for equipment servicing

Are maintenance devices and tools available for equipment servicing? Yes

Notes/Comments

None

3. Inspect anchorage and grounding

Is the equipment's anchorage and grounding in good mechanical condition? No

Is the equipment's anchorage and grounding sufficient? Yes

Notes/Comments

Foundation starting to crumble at the edges but sufficient platform still supporting equipment

4. Mechanically operate circuit breakers and switches

Do all circuit breakers and switches operate mechanically? Yes

Notes/Comments

None

5. Inspect bolted connection integrity

See chapter 7

Are all bolted connections tightened correctly? Yes

Notes/Comments

None

6. Verify lubrication on moving current-carrying parts and sliding surfaces

See the manufacturer's instructions



Are all moving current-carrying parts and sliding surfaces lubricated? Yes

Notes/Comments

None

7. Verify mechanical interlock systems for correct sequencing

Are mechanical interlock systems in place and correctly sequenced? Yes

Notes/Comments

None

8. Verify mechanical indicating devices are functional

Are mechanical indicating devices functional? Yes

Notes/Comments

None

9. Verify filters are clean and in place

Are filters clean and in place? No

Notes/Comments

Filters need replacement - significant blockage

10. Verify fuse holders provide mechanical support and contact integrity

Do fuse holders provide mechanical support and contact integrity? Yes

Notes/Comments

None

11. For individual components, refer to the appropriate chapter(s) of this standard

Have all individual components been inspected? N/A

Notes/Comments

None

